

QUICK GUIDE

Welcome to the growing family of the Azeroon keypad owners!
Thank you for purchasing the keypad directly from its developer.
Your purchase supports us in further development.

SETUP VIDEO
azeron.eu/cyborg2setup



STEP 1

Adjust the keypad to your hand.
Use the included screwdriver to
loosen and tighten the screws.

1 Thumbstick rotation

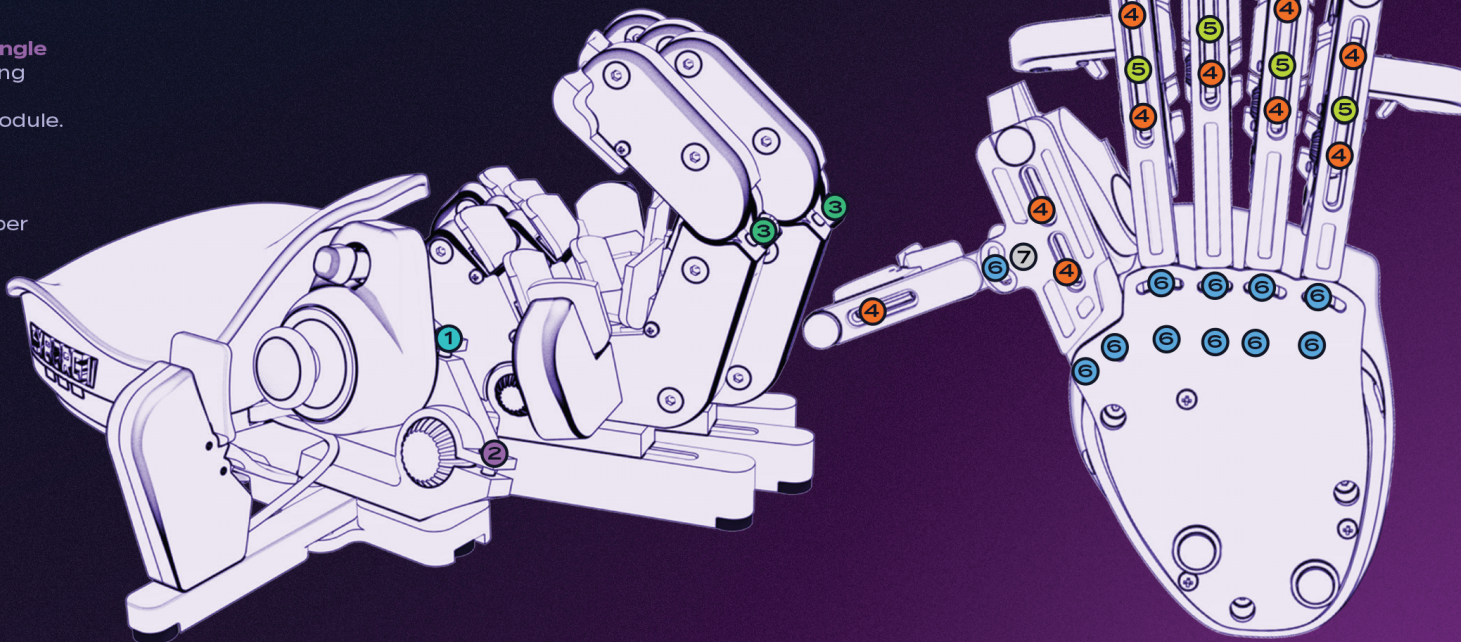
Rotate the
thumbstick / 5-way
switch part.

2 Thumbstick angle

Adjust the tilting
angle of the
thumbstick module.

3 Tower tops

Adjust the upper
tower keys.



STEP 2

Go to azeron.eu/downloads and download the latest Azeroon
software. Install it on your PC. To learn more about the software,
go to azeron.eu/cyborg2setup and open the manual.

STEP 3

Plug in the USB-C cable in the keypad
and the PC. Launch the Azeroon
software to set up the keybinds.

4 Tower distance

Adjust the distance
from a tower to the
palmrest.

5 Tower angles

Adjust the angle of
each tower

6 Rail placement

Adjust the angle
between tower rails.


7 Missing screw?

This screw is
removed for safer
shipping. It is
included in the
package.

Please be gentle and protect your keypad from prolonged heat (like having it in a hot car)!

If you have any questions or experiencing any problems, do not hesitate to contact us at Info@azeron.eu

HAVE FUN GAMING!

 azeron.eu/discord

CYBORG II

BY
AZERON

30 mappable
easy-to-reach
keys.

Omron switches
with 50 million click
lifespan.

2m detachable
USB-C cable.

Swap between
flat or curved
palmrest.

Customizable
RGB profile lights.

Easy-to-reach and
adjustable top keys.

Redesigned
top keys.

Towers and thumbstick
can be tilted.

Mappable 5-way
directional switch.

Redesigned tower
with two keys.

Hall effect thumbstick.
• no more stick drift;
• more precise and smooth;
• choose between WASD
or XBOX (360°) movement;
• swappable caps;
• refer to the manual
for using the restrictor ring.

Six on-board profiles:
• single click to select the
next profile;
• double click to select
the previous profile;
• hold to select the first
(default) profile.

Perfect for gaming and creative work, each key on this device can be set as any shortcut like copy, paste, undo, etc.